

Anti-Rituximab Monoclonal Antibody

Cat# AB3003-100, AB3003-500

Product description

Product: Anti-Rituximab Monoclonal Antibody

Host: Mouse

Isotype: IgG

Format: Purified

Immunogen: Rituximab

Product Type: Monoclonal Antibody

Other Names: Mabthera®, Rituxan®

Formulation

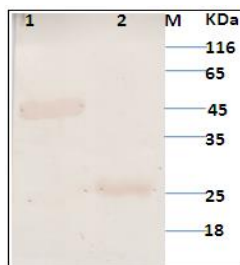
Anti-Rituximab Monoclonal Antibody stored in 1X Phosphate Buffer Saline, 20% Glycerol.

Application

The product is purified on protein-G affinity resin and specifically recognizes the Rituximab drug. The antibody can be used for to measure the level of Rituximab and Biosimilars drug in bioanalytical assay and western blot. It is recommended that the end user optimizes the product for their particular application with appropriate negative and positive controls.

Specificity

This Anti Rituximab antibody is an idiotypic antibody and recognizes specifically the humanized Rituximab monoclonal antibody.



M- Protein marker

1. Rituximab whole molecule- 10 µg

2. Fab fraction- 10 µg

Tested Application

This product has been tested for ELISA and western blot application.

Storage

Store at: -20°C in aliquots and avoid repeated freeze/thaw cycles.

Pack size available

100 µg, 500 µg

Regulatory:

For research use only (RUO)

This Product is for Research Use only (RUO) and not to be used in Diagnostic Procedure.